



RIPAFLAM

USER'S GUIDE



RIPAFLAM

HEAT PRODUCTION SET

USER'S GUIDE

Warranty	2
Important notice.....	3
Technical data	4
Installation	5
Connections	8
Operating mode.....	13
Spare parts list	13

WARRANTY

RIPAFLAM WARRANTY

Your RIPAFLAM appliance has been manufactured with the greatest care using quality materials. Numerous tests and inspections were carried out during production.

Every component meets the requirements of strict specifications in order to guarantee performance and adaptability.

For all maintenance work and spare parts, your RIPACK dealer ensures the supply of spare parts in accordance with the RIPACK requirements, guarantee of quality and of safety.

ONE YEAR WARRANTY:

WARRANTY OF OPERATION for one year under the following conditions:

- that the appliance has been used in compliance with the user's guide;
- that the appliance has not been disassembled except for the procedures described in the user's guide;
- that the appliance is physically intact (for example: the body of the appliance, the combustion nozzle must not be deformed in any way, and, for example, the thread of the fittings must be intact...).

This warranty does not apply to the following replacement part:
Hose.

All replacement parts must be original RIPACK spare parts. The manufacturer shall not be held responsible and shall not be liable for any claims in the event that the aforementioned warnings and instructions are not respected.

The company RIPACK shall not be held responsible for accidents involving persons or goods which arise from the incorrect use of the appliance or from using it for an application which is not specifically mentioned in the user's guide. All disputes shall be governed by the courts of Bordeaux - France. No other place of jurisdiction shall be accepted.

The use and the resale of the RIPAFLAM implies the acceptance of the aforementioned terms and conditions.

IN THE EVENT OF A WARRANTY CLAIM, PLEASE ATTACH A COPY OF YOUR SUPPLIER'S INVOICE

IMPORTANT NOTICE

**YOU MUST READ THESE INSTRUCTIONS
BEFORE USING THE APPLIANCE**

THIS APPLIANCE IS MEANT **EXCLUSIVELY FOR PROFESSIONAL USE**.

USERS OF THE RIPAFLAM **MUST READ THIS USER'S GUIDE** COMPLETELY AND MUST BE TRAINED FOR THE APPLICATIONS THAT REQUIRE THE USE OF THIS APPLIANCE.

THIS USER'S GUIDE MUST BE KEPT FOR FUTURE REFERENCE.

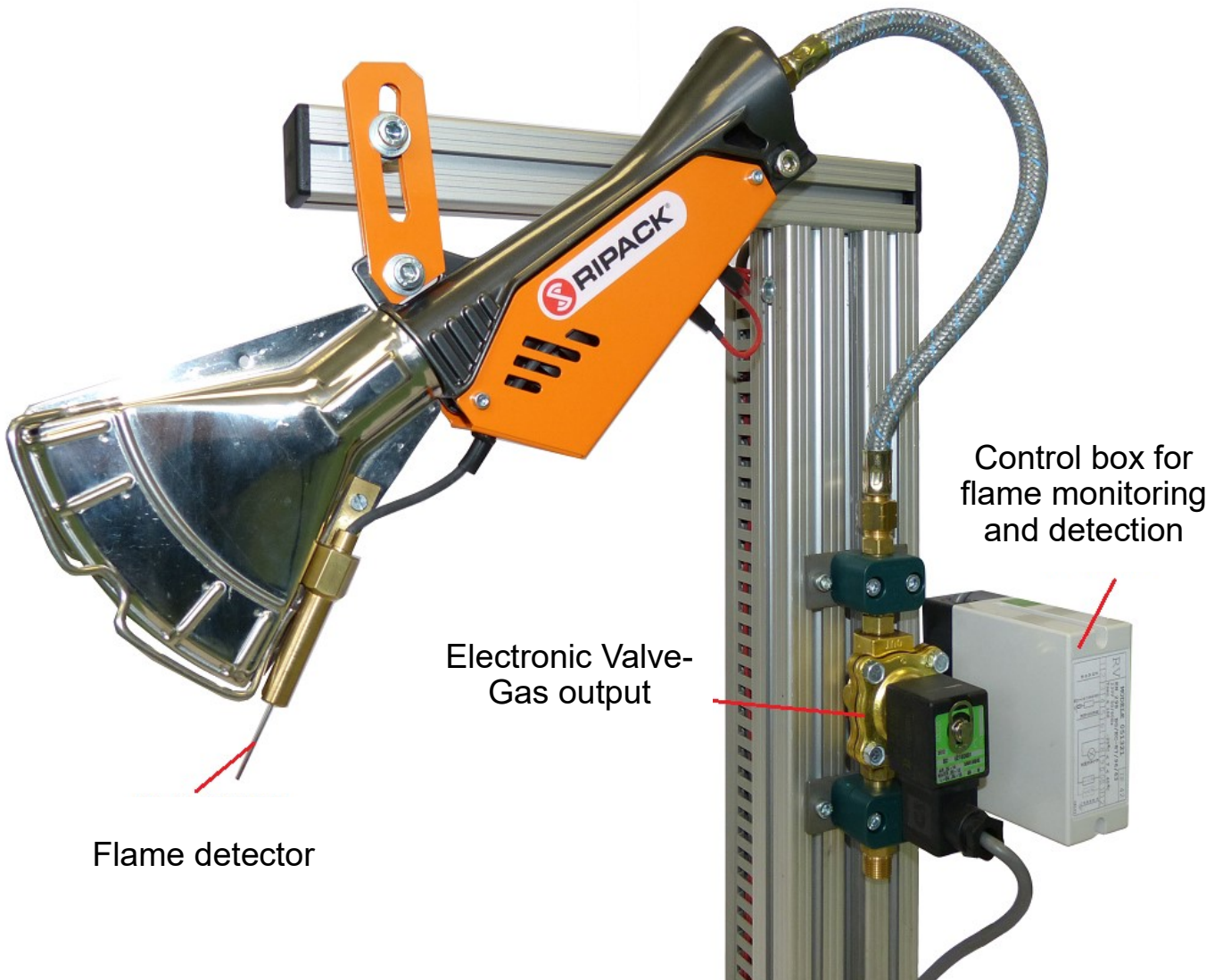
THE RIPAFLAM IS DESIGNED TO PRODUCE A HEAT SOURCE ALLOWING THE WARMING UP, THE DRYING OR TRIMMING OF PARTS.

CLOSE THE VALVE OF THE GAS BOTTLE OR NETWORK AFTER EACH USE AND WHEN NOT IN USE FOR LONG PERIODS OF TIME.

BEFORE THE FIRST SET UP AND INSTALLATION, YOU NEED TO INSURE THAT GAS FITTINGS SUPPLIED ARE ADAPTED TO YOUR NETWORK OR GAS BOTTLE.

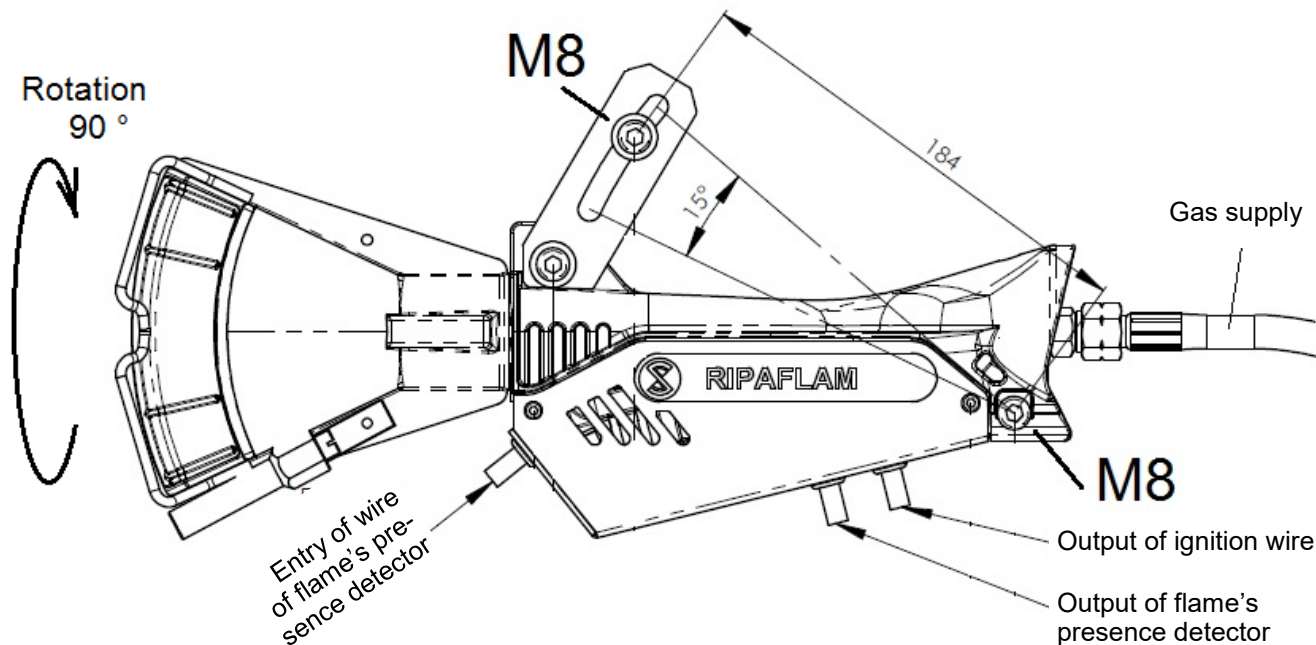
TECHNICAL DATAS

Power developed	45 to 76 kW / 153500 to 259300 btu (with LPG) 50 or 55 kW / 170600 to 187700 btu (with natural gas, according to pressure)
Temperature at 30 cm (1') :	450°C (852°F)
Rotating flat flame	Length 200 mm (8")
Length of the burner	360 mm (14.17")
Body made	Molded Aluminum
Electric supply	220 V (single phase)



RIPAFLAM is a **SEFMAT** product (made in France)

INSTALLATION



The burner is maintained with 2 screws M8. There are 2 settings available, a 15° movement of the entire set and a rotation of the nozzle by 90°.

The RIPAFLAM is delivered ready to set up.

The “burner set” (picture #1) is equipped with a flame detection in the front. In case of non lighting, the valve(s) will cut automatically the gas supply.

The piloting is managed by the electronic ignition module.

This module ignites with impulses during several seconds. At the same time, the electronic valve opens and supplies gas in the set. In case of bad ignition (no flame), the electronic module will automatically cut the gas supply. It's possible to obtain an information of DEFECT from the electronic ignition module.

Assembly

All electronic control wiring of the system is pre-connected and requires no additional assembly. The AC power wiring requires a dedicated/grounded 220vac or the (*optional) 110vac source be connected to the power converter box via the power adaptor and the power cord connections. (see figure A)



*Figure A

Making sure the power button is in the off position on the power converter module, connect the 110vac power source to the converter module. Next, connect the *orange-plugged AC connection from the Ripaflam wiring to the front of the converter module. (see figure B)



*Figure B

Before turning on power to the converter module, make sure the module's voltage input selector switch is in the "110v" setting otherwise the unit will not work properly. (see figure C).

**(Optional equipment when running equipment on 120vac)*



*Figure C

RIPAFLAM is a **SEFMAT** product (made in France)

Now you are ready to connect the Propane Gas supply to the system. It is recommended that a tank size be at least 30 lbs. or greater as the smaller BBQ-size (20lbs.) tanks do not supply enough pressure to sustain a good burn at all settings. Make sure that the electronic valve is connected in the proper orientation as it has an "IN" and an "OUT" side. (see figure D)



Figure D

You can open the main gas valve of your Propane Gas cylinder to the system. You must prime the regulator by pulling the **RED** button laterally until you hear the gas pressure stabilize. (See figure E)

Now check for leaks using soapy water or smelling the connections (Propane has a distinct pungent odor) and you are ready to fire the Ripaflam system.

**(Optional equipment when running equipment on 120vac)*

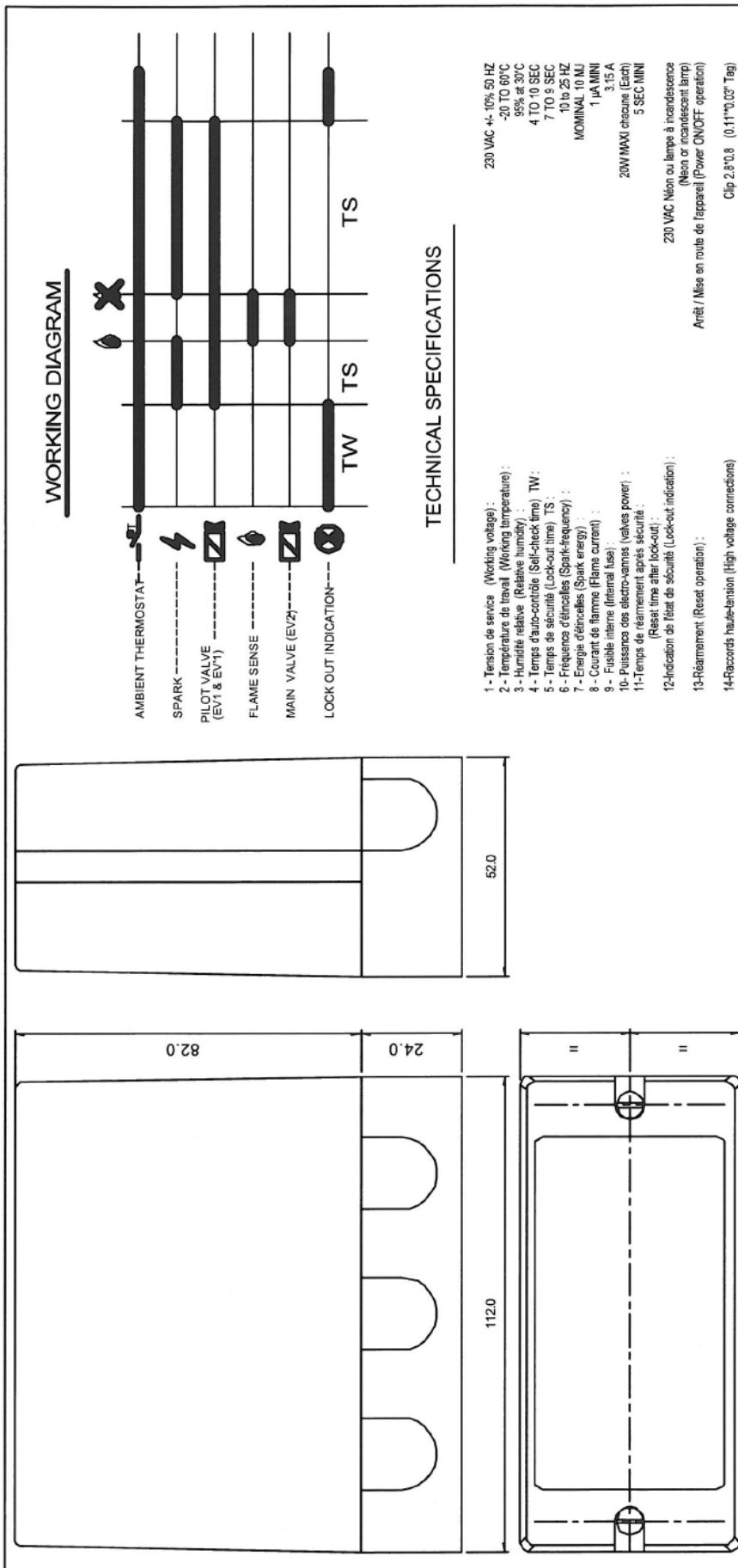


Figure E

To start the system, apply 220vac to the power cord or (*turn on the on/off switch on the power converter module). There will be a 5 second delay before the system ignites. Adjust the flame with the manual regulator as needed. Turn off the system using the same on/off switch or by controlling the 220vac (*110vac optional) power source remotely.

RIPAFLAM is a **SEFMAT** product (made in France)

CONNECTION TO THE IGNITION MODULE:



necessary to locate LINE and NEUTRAL at the installation

MODIFICATIONS		DATE (MM)
Matière	Quantité	Des. 08.03.96 / AJL
	1	Cont.

Idesignation: **Spécifications**
 N°: 05132103

Note :

A defect in the flame detection can appear in 2 cases even with a good ignition (the flame stops after some seconds):

- The RIPAFLAM is not connected to the ground. Test by connecting directly a ground wire to the combustion nozzle of the burner on the ground of the electric module
- Reverse line / neutral in the power plug (terminal 2 and 5). Reverse in the electric module or at the opposite side of the electric wire.

Optional:

In case of 2 valves connected, cable the valves in parallel to terminal 6 and 10. The valve EV2 terminal 11 is dedicated for a function not used by the RIPAFLAM.

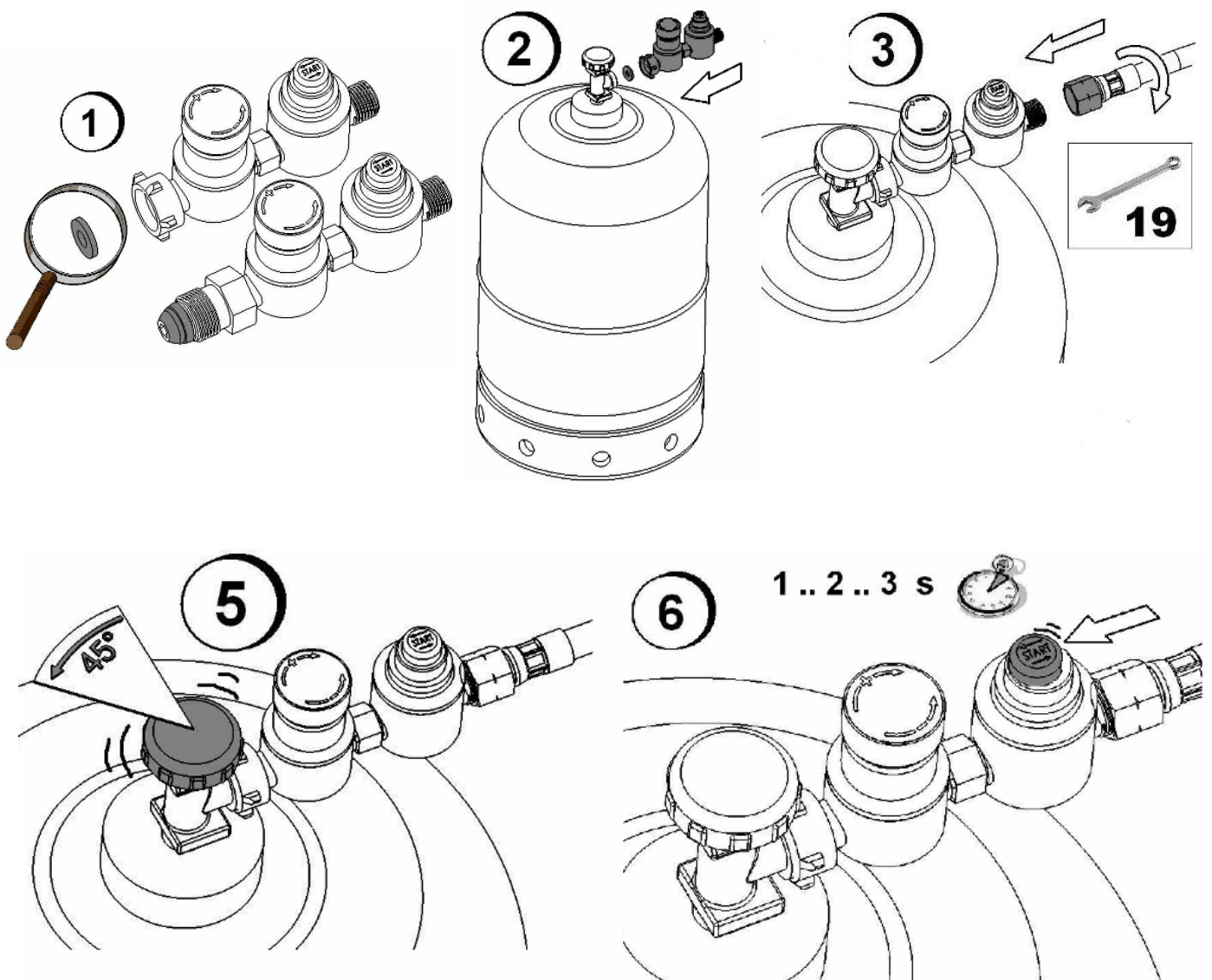
CONNECT TO A GAS CYLINDER - PROPANE

with Propane Gas use / LPG

Ensure the correct adaptability of the fittings between the supplied regulator and your gas cylinder. Connect the regulator to your gas cylinder.

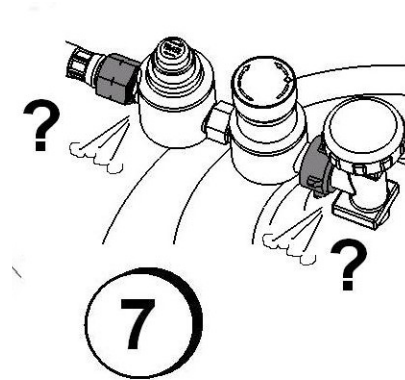
It is recommended that a cylinder size be at least 30 lbs. or greater, as the smaller BBQ-size (20lbs.) cylinders do not supply enough pressure to sustain a good burn at all settings.

Open the main gas valve of your Propane Gas cylinder. You must prime the pressure regulator by pulling the RED button laterally until you hear the gas pressure stabilize.

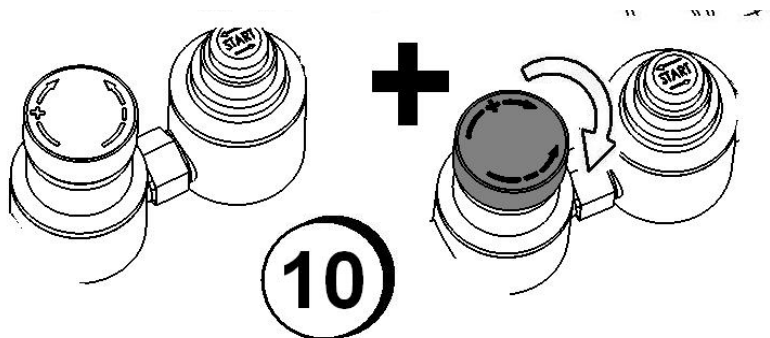


CONNECT TO A GAS CYLINDER - PROPANE

Now check for leaks using soapy water or smelling the connections (Propane has a distinct pungent odor) and you are ready to fire the RIPAFLAM system.

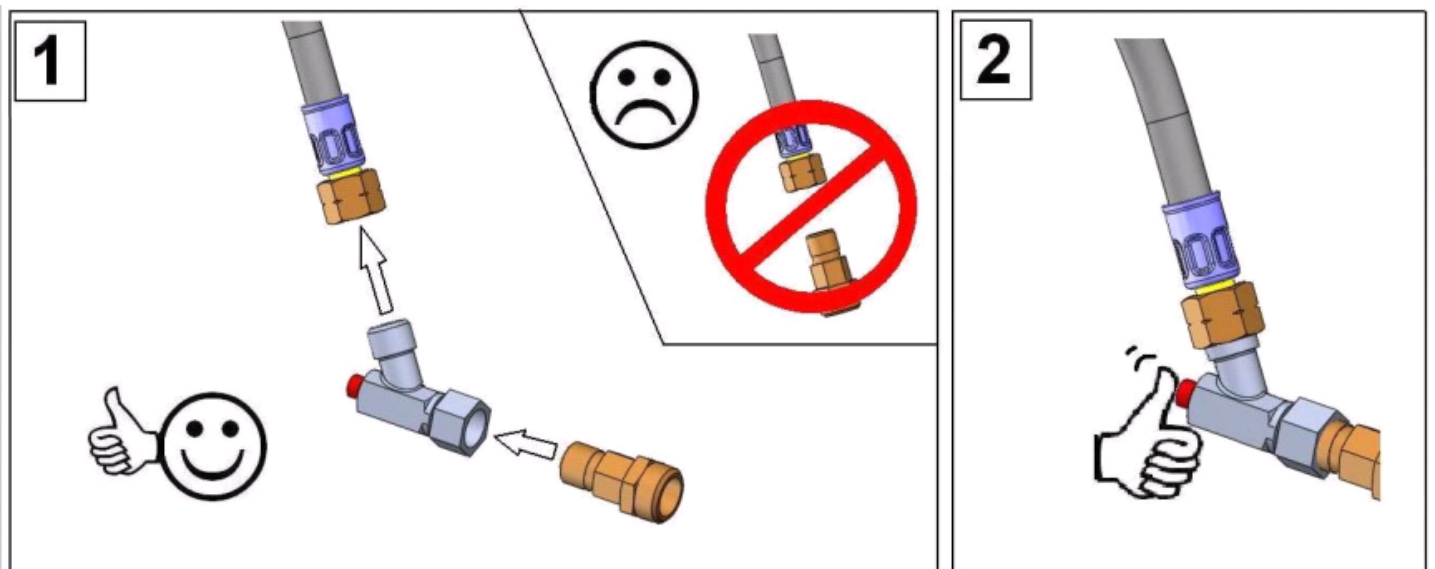


You can adjust the power of the Ripaflam according to your need thanks to the Securipack regulator



CONNECT TO A NATURAL GAS NETWORK

- Connect the safety valve directly to your network thanks to the intermediary brass part fitting 3/8L - 15/21 (1/2 male) included (drawing below).
-
- Open the gas network and push the red button during 3 seconds to feed the hose.
- Now check all fittings for leaks using soapy water and you are ready to fire the RIPAFLAM system.
- The safety valve is not equipped with pressure regulator. The RIPAFLAM works directly with the network pressure.



NETWORK CHARACTERISTICS

Your RIPAFLAM is designed according to your network:

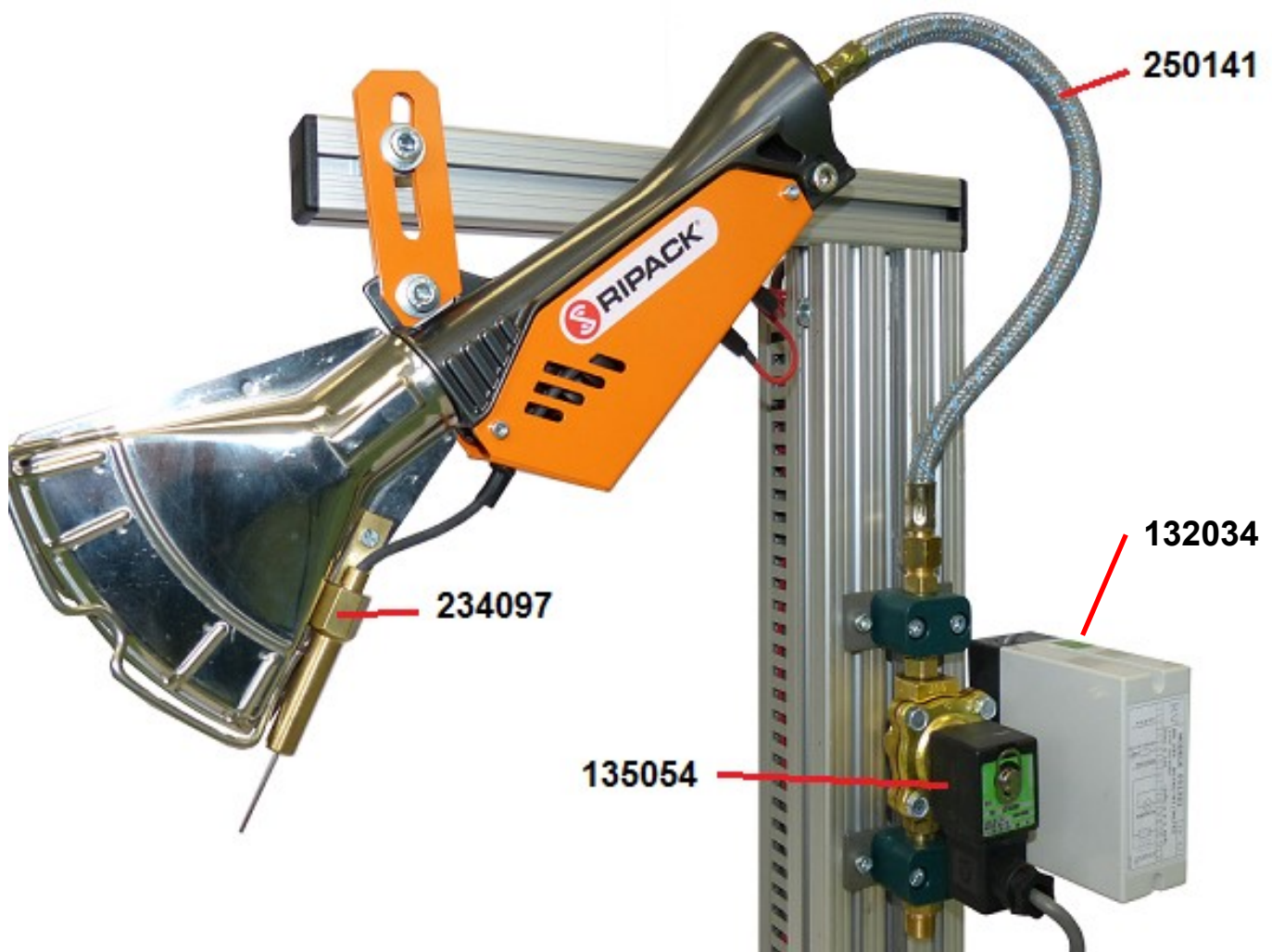
- Propane : standard pressure 3.5 bars (50 psi) for a maximum power
- Natural Gas : necessary to adapt the RIPAFLAM to precise pressure (6 different range of pressure)

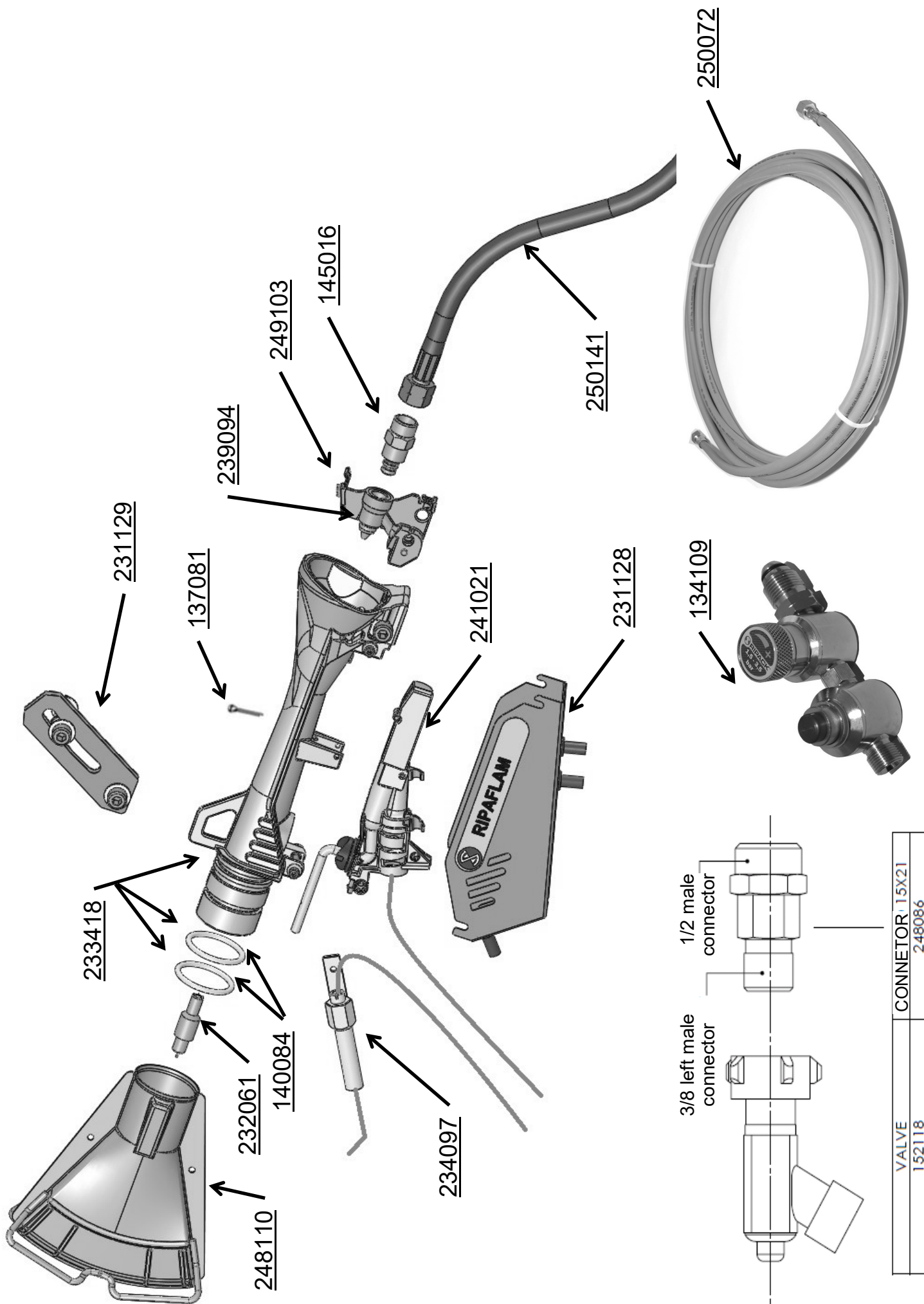
OPERATION

Open the gas cylinder / Open the network supply

- Start the regulator (propane) or the safety valve (Natural Gas) to feed the hose up to the electronic valve.
- Operation of the RIPAFLAM : apply 220vac to the power cord manually, with a switch or automaton managing system.
-
- There will be a 5 second delay before the system ignites.

SPARE PARTS





RIPAFLAM is a SEFMAT product (made in France)

Code	Description
132034	Electronic Control Box RV 051321 IP 42
134109	Adjustable pressure regulator 21-50 PSI
135054	Electronic valve
137081	Ground pin
140054	O'Ring / Pressure regulator
140084	O'Ring- ins. Ø int. 34,82x3,53
145016	Jet cover
231128	Casing with wire pass
231129	Holding kit
232061	Spark plug
233418	Aluminium Body with O'rings
234097	Flame detection / Burners unit
233418	Body aluminium with O'rings (dark grey)
239094	Jet - Propane
241021	Electrical Connection Kit including ignition wire
248110	Combustion nozzle
249103	Jet Holder complete - Propane (holder, jet, cover)
250072	Hose 8.0 M with connections (intØ 4) - DIN
250141	Flexible pipe 400 mm

